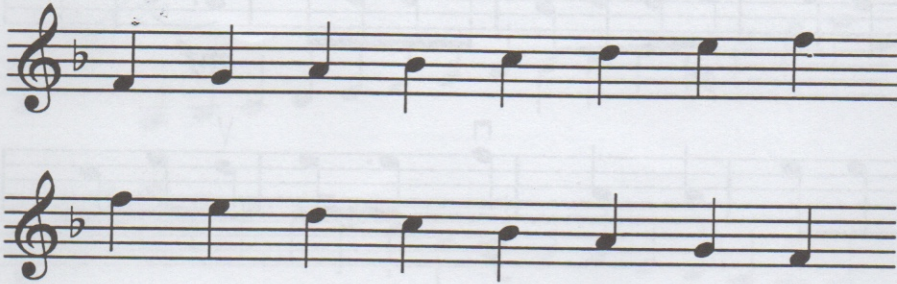


KEY OF F MAJOR

one octave

scale

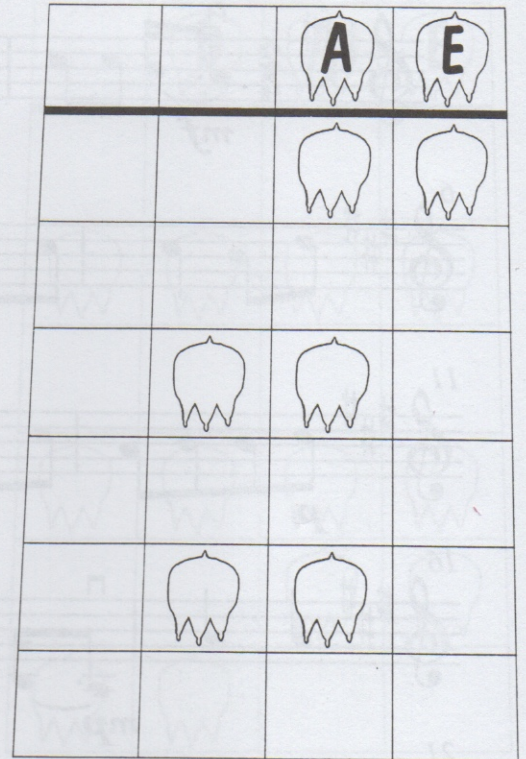


Write the letter names of the scale in the footprints.

arpeggio



Highlight the notes of the arpeggio on the footprint map.



dinosaur footprint map

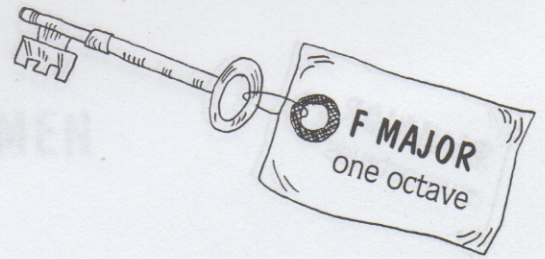
dinosaur rhythm game

Practise the scale and arpeggio using the **Fabrosaurus** rhythm:



Make up another one.

WALTZING MATILDA



Cheerfully

Trad.

The musical score for 'Waltzing Matilda' is written on a single treble clef staff in F major (one flat) and 4/4 time. The piece is marked 'Cheerfully' and 'Trad.'. The score consists of five lines of music. The first line starts with a dynamic of *mf* and ends with *f*. The second line starts at measure 4 with a dynamic of *mp*. The third line starts at measure 7 with a dynamic of *mf* and ends with *f*. The fourth line starts at measure 11 with a dynamic of *mp*. The fifth line starts at measure 14 with a dynamic of *pp* and is marked '(like a ghostly echo)'. There are also some performance markings like accents and a 'V' marking.

Compose your own short tune in F major:

Two blank musical staves are provided for the student to compose their own short tune. Both staves are in F major, indicated by a single flat (Bb) on the first line of the treble clef.