

KEY OF G MAJOR

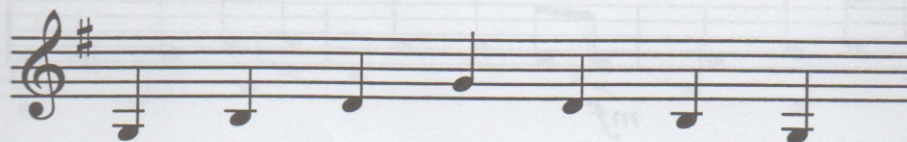
one octave

scale



Write the letter names of the scale in the footprints.

arpeggio



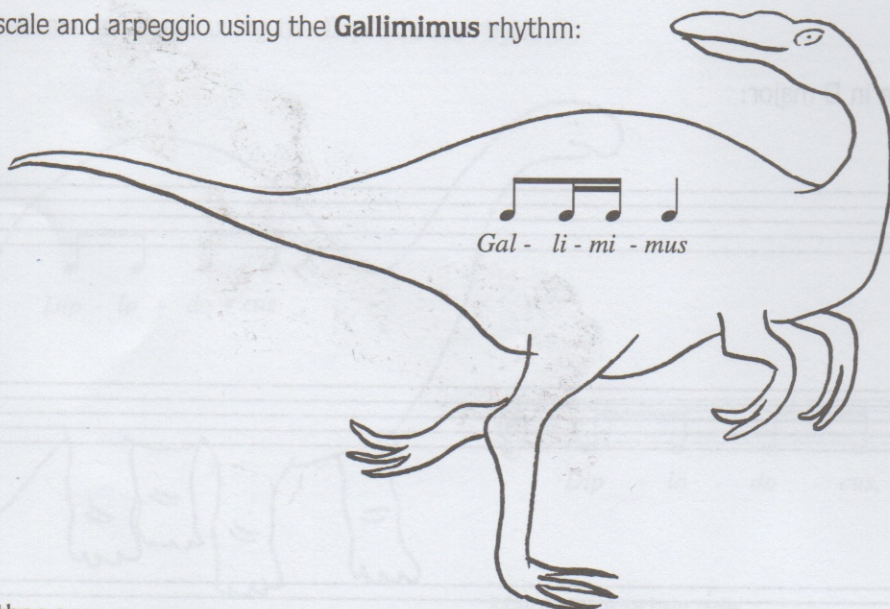
Highlight the notes of the arpeggio on the footprint map.

G	D		

dinosaur footprint map

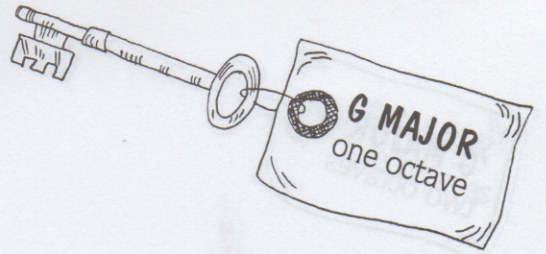
dinosaur rhythm game

Practise the scale and arpeggio using the **Gallimimus** rhythm:



Make up another one.

LONG, LONG AGO



With a singing tone

T. Bailey

Musical score for "LONG, LONG AGO" in G major, 2/4 time. The score consists of six staves of music, each starting with a measure number in the left margin. The dynamics are indicated by *mf*, *mp*, *f*, and *p*. The music features a simple melody with eighth and quarter notes, and rests. A fermata is placed over the final note of the first and fifth staves.

6 *mf*

11 *mp*

17 *f* *p*

23 *mf*

27 *f*

Compose your own short tune in G major:

Two blank musical staves in G major (one sharp) for composing a short tune. Each staff begins with a treble clef and a sharp sign for the key signature.