

Nº Fichero 4622

Violin



Conservatorio de Música - AVILA
Registro de Entrada
Núm. 4622
Fecha 76-I-2000

STEPPING STONES

KATHERINE and HUGH COLLEDGE

Primera actuación
1. First performance

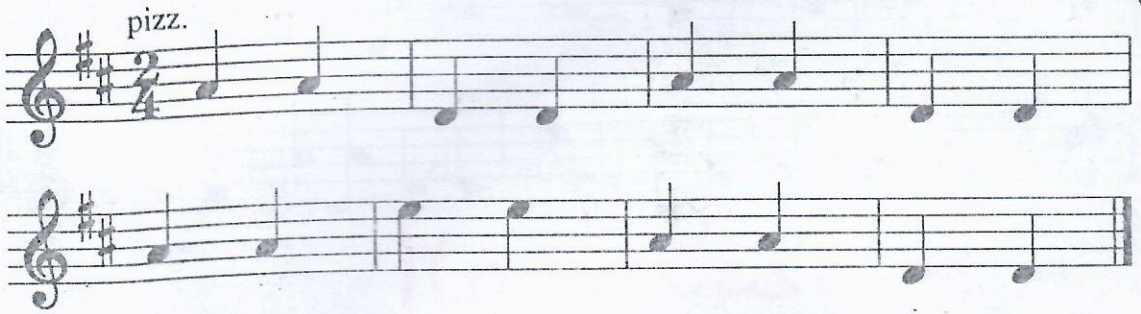
Count 2 bars



Dos por dos

2. Two by two

Count 4 bars



Serpientes y ladrones

3. Snakes and ladders

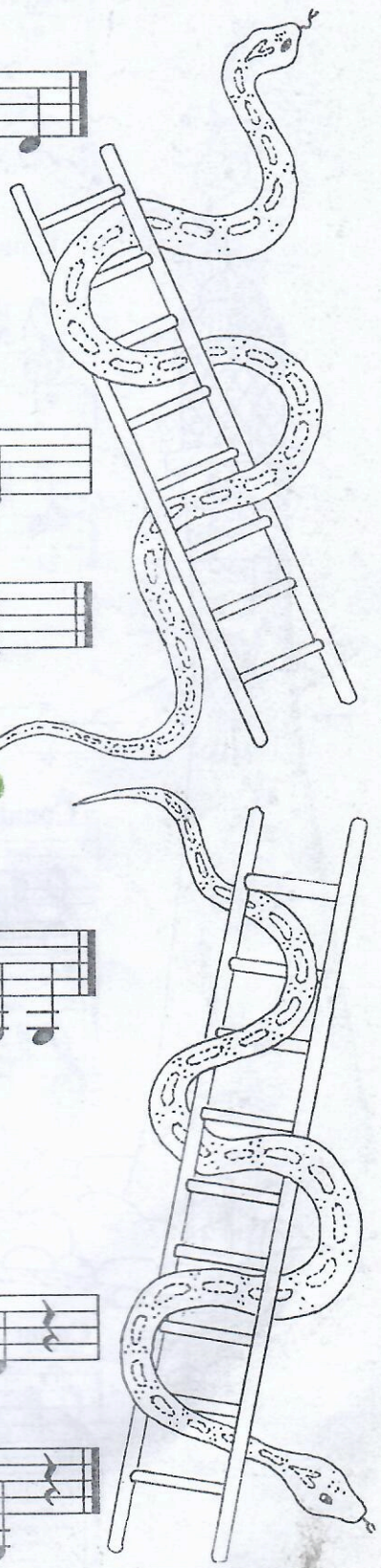
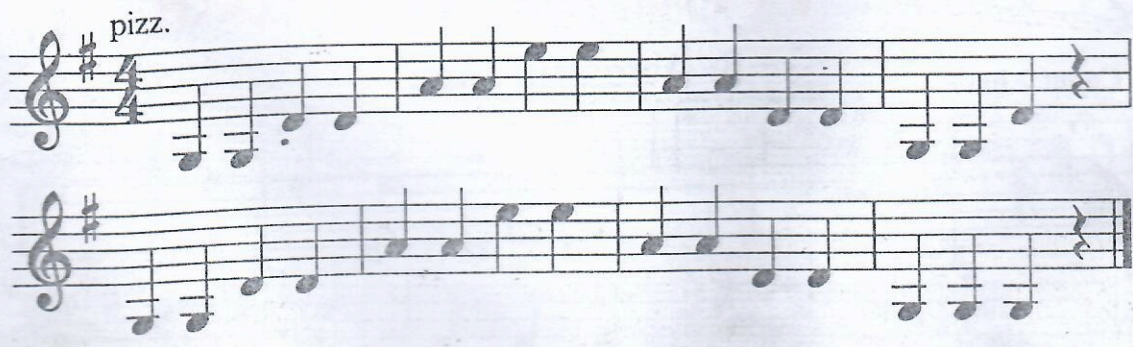
Count 2 bars



Paso a paso

4. Stepping stones

Count 2 bars



Vals

5. Waltz

Count 4 bars

pizz.

Musical notation for '5. Waltz' consisting of two staves. The first staff begins with a treble clef, a key signature of one sharp (F#), and a 3/4 time signature. The melody consists of quarter notes and eighth notes. The second staff continues the melody with similar rhythmic patterns.

Rotonda

6. Roundabout

Count 4 bars

pizz.

Musical notation for '6. Roundabout' consisting of two staves. The first staff begins with a treble clef, a key signature of two sharps (F# and C#), and a 4/4 time signature. The melody features quarter notes and eighth notes. The second staff continues the melody.

Faro

7. Lighthouse

Count 2 bars

(arco)

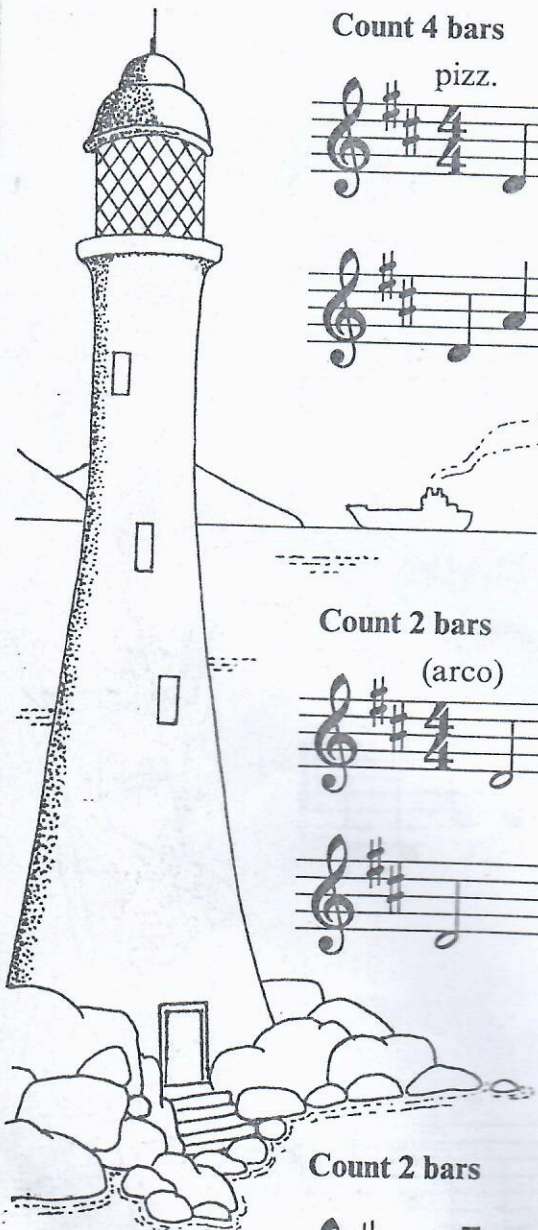
Musical notation for '7. Lighthouse' consisting of two staves. The first staff begins with a treble clef, a key signature of two sharps (F# and C#), and a 4/4 time signature. The melody consists of quarter notes. The second staff continues the melody.

Melodia rilassante

8. A restful tune

Count 2 bars

Musical notation for '8. A restful tune' consisting of one staff. It begins with a treble clef, a key signature of one sharp (F#), and a 4/4 time signature. The melody consists of quarter notes.



El carrito de los helados³

9. Ice-cream van

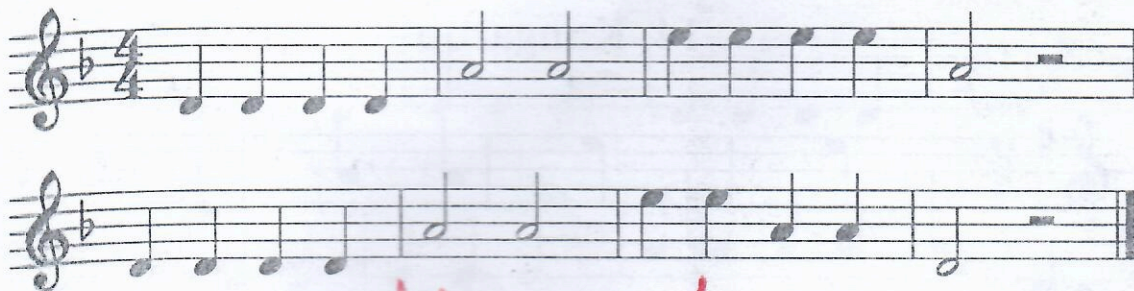
Count 2 bars



Escondida en la hierba

10. Hiding in the long grass

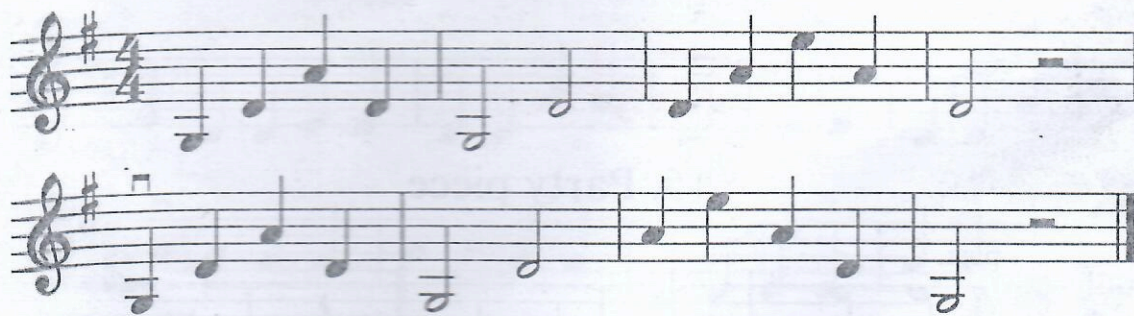
Count 2 bars



Margaritas

11. Buttercups and daisies

Count 4 bars



Caja de música

12. Musical box

Count 4 bars



Ritmo de caracol

Count 2 bars

13. At a snail's pace

Musical notation for 'At a snail's pace' in G major, 4/4 time. It consists of two staves. The first staff has a treble clef and a key signature of one sharp (F#). The melody is: G4 (half), A4-B4 (quarter), C5 (quarter), B4-A4 (quarter), G4 (half). The bass line is: G3 (half), G3 (half). The second staff has a treble clef and a key signature of one sharp. The melody is: G4 (half), A4-B4 (quarter), C5 (quarter), B4-A4 (quarter), G4 (half). The bass line is: G3 (half), G3 (half).

Canguro

Count 4 bars

14. Kangaroo

Musical notation for 'Kangaroo' in G major, 2/4 time. It consists of two staves. The first staff has a treble clef and a key signature of one sharp. The melody is: G4 (quarter), A4 (quarter), B4 (quarter), C5 (quarter), B4 (quarter), A4 (quarter), G4 (quarter), G4 (quarter). The bass line is: G3 (quarter), G3 (quarter), G3 (quarter), G3 (quarter), G3 (quarter), G3 (quarter), G3 (quarter), G3 (quarter). The second staff has a treble clef and a key signature of one sharp. The melody is: G4 (quarter), A4 (quarter), B4 (quarter), C5 (quarter), B4 (quarter), A4 (quarter), G4 (quarter), G4 (quarter). The bass line is: G3 (quarter), G3 (quarter), G3 (quarter), G3 (quarter), G3 (quarter), G3 (quarter), G3 (quarter), G3 (quarter).

Fiesta

15. Party piece

Musical notation for 'Party piece' in G major, 4/4 time. It consists of four staves. The first staff has a treble clef and a key signature of one sharp. The melody is: G4 (quarter), A4 (quarter), B4 (quarter), C5 (quarter), B4 (quarter), A4 (quarter), G4 (quarter), G4 (quarter). The bass line is: G3 (quarter), G3 (quarter), G3 (quarter), G3 (quarter), G3 (quarter), G3 (quarter), G3 (quarter), G3 (quarter). The second staff has a treble clef and a key signature of one sharp. The melody is: G4 (quarter), A4 (quarter), B4 (quarter), C5 (quarter), B4 (quarter), A4 (quarter), G4 (quarter), G4 (quarter). The bass line is: G3 (quarter), G3 (quarter), G3 (quarter), G3 (quarter), G3 (quarter), G3 (quarter), G3 (quarter), G3 (quarter). The third staff has a treble clef and a key signature of one sharp. The melody is: G4 (quarter), A4 (quarter), B4 (quarter), C5 (quarter), B4 (quarter), A4 (quarter), G4 (quarter), G4 (quarter). The bass line is: G3 (quarter), G3 (quarter), G3 (quarter), G3 (quarter), G3 (quarter), G3 (quarter), G3 (quarter), G3 (quarter). The fourth staff has a treble clef and a key signature of one sharp. The melody is: G4 (quarter), A4 (quarter), B4 (quarter), C5 (quarter), B4 (quarter), A4 (quarter), G4 (quarter), G4 (quarter). The bass line is: G3 (quarter), G3 (quarter), G3 (quarter), G3 (quarter), G3 (quarter), G3 (quarter), G3 (quarter), G3 (quarter).

