

The C Chord

The notes in the C chord are C, E and G.

A musical staff in 4/4 time showing a melodic line. The notes are: C4, D4, E4, F4, G4, A4, B4, C5, B4, A4, G4, F4, E4, D4, C4. The first four notes are quarter notes, and the remaining ten are half notes.

Two musical staves. The first staff shows the C chord in the bass clef with notes C2, E2, and G2. The second staff shows the fingering on the guitar strings: 1 on the 3rd string.

Two musical staves. The first staff shows the C chord in the treble clef with notes C4, E4, and G4. The second staff shows the fingering on the guitar strings: 1 on the 3rd string, 3 on the 2nd string.

Two musical staves. The first staff shows the C chord in the bass clef with notes C2, E2, and G2. The second staff shows the fingering on the guitar strings: 3 on the 3rd string, 3 on the 2nd string.

Two musical staves. The first staff shows the C chord in the treble clef with notes C4, E4, and G4. The second staff shows the fingering on the guitar strings: 1 on the 3rd string, 2 on the 2nd string.

Two musical staves. The first staff shows the C chord in the bass clef with notes C2, E2, and G2. The second staff shows the fingering on the guitar strings: 2 on the 3rd string, 3 on the 2nd string.

Two musical staves. The first staff shows the C chord in the treble clef with notes C4, E4, and G4. The second staff shows the fingering on the guitar strings: 3 on the 3rd string, 4 on the 2nd string.

Two musical staves. The first staff shows the C chord in the bass clef with notes C2, E2, and G2. The second staff shows the fingering on the guitar strings: 2 on the 3rd string, 2 on the 2nd string.

Two musical staves. The first staff shows the C chord in the treble clef with notes C4, E4, and G4. The second staff shows the fingering on the guitar strings: 2 on the 3rd string, 2 on the 2nd string.

Two musical staves. The first staff shows the C chord in the bass clef with notes C2, E2, and G2. The second staff shows the fingering on the guitar strings: 2 on the 3rd string, 4 on the 2nd string.

Two musical staves. The first staff shows the C chord in the treble clef with notes C4, E4, and G4. The second staff shows the fingering on the guitar strings: 1 on the 3rd string, 2 on the 2nd string.

Two musical staves. The first staff shows the C chord in the bass clef with notes C2, E2, and G2. The second staff shows the fingering on the guitar strings: 1 on the 3rd string, 2 on the 2nd string.

Two musical staves. The first staff shows the C chord in the treble clef with notes C4, E4, and G4. The second staff shows the fingering on the guitar strings: 2 on the 3rd string, 3 on the 2nd string.

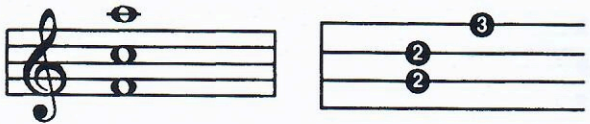
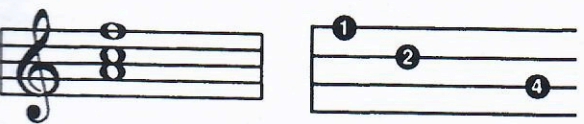
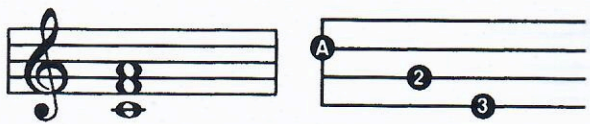
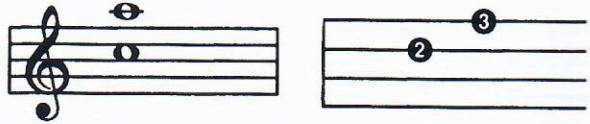
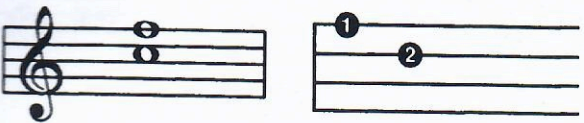
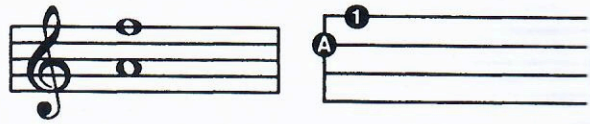
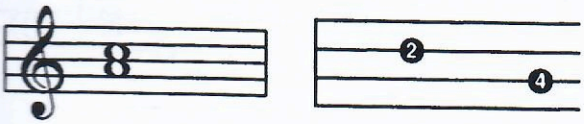
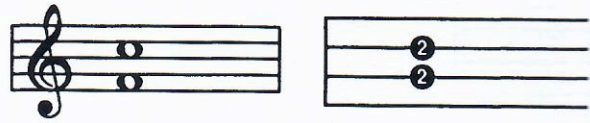
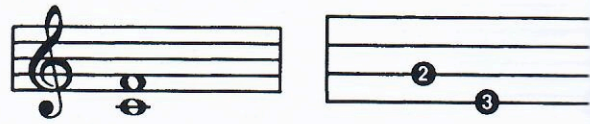
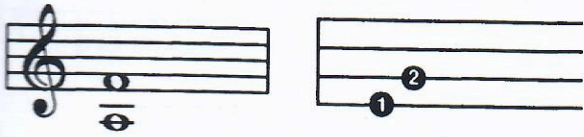
The G Chord

The notes in the G chord are G, B and D.



The F Chord

The notes in the F chord are F, A and C.



The A Minor Chord

The notes in the A minor chord are A, C and E.

