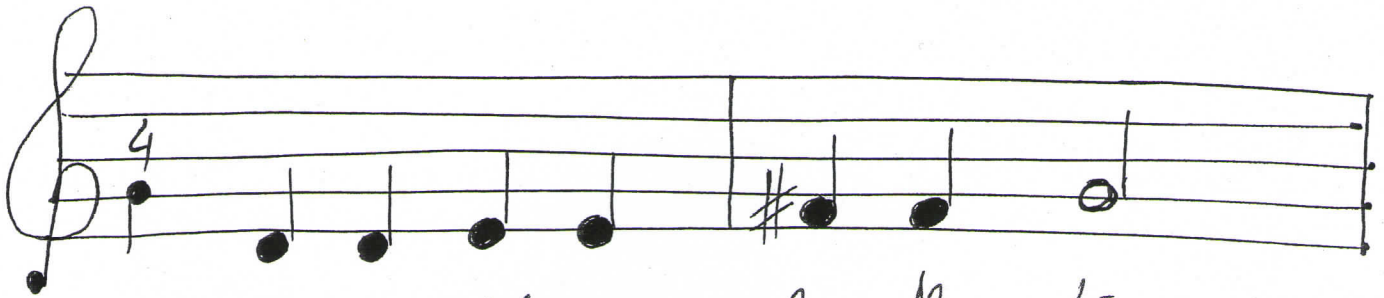
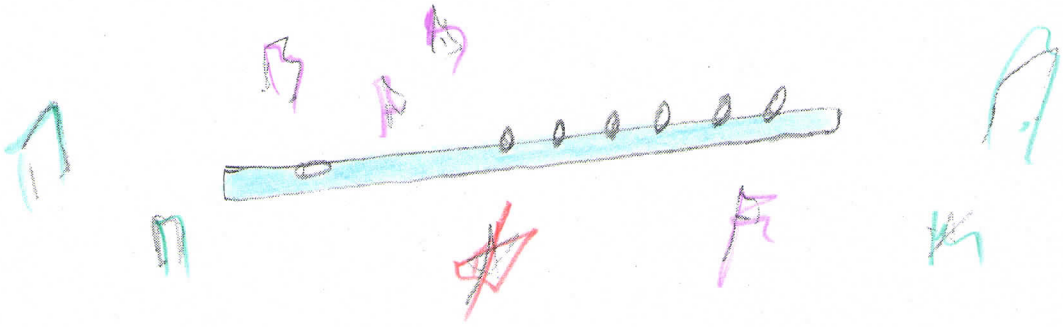
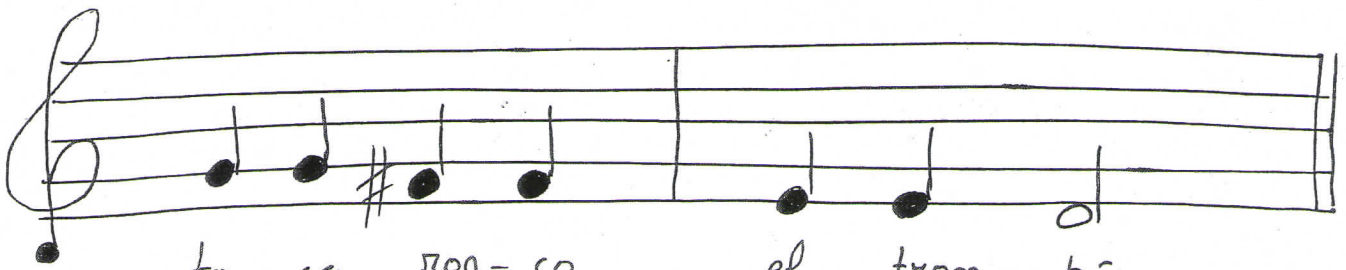


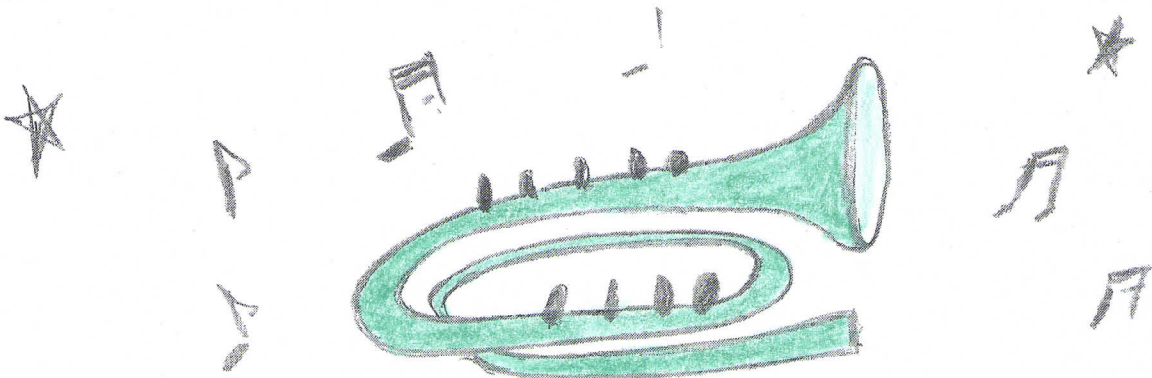
El Flautín



To- ca dul- ce el flau- tén



to- ca ron- co el trom- bón



A SERRÍN A SERRÁN

3 3 1 3 3 1 3 3 1 1

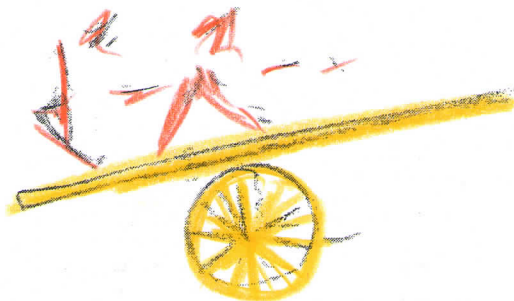
A - SE - RRÍN A - SE - RRÁN LOS MA - DE - ROS

3 3 1 3 3 1 1 3 3 1 1

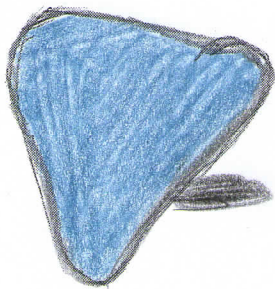
DE SAN JUAN EL PA - LA - CIO LA CO - CI - NA

3 3 1 1 3 3 1 1

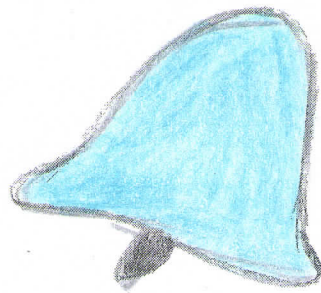
¿COÁN - TOS DE - DOS HAY EN - CI - YA ?



DIN - DAN



Din dan dindin dan las cam-pa-nas to-ca-ran

A musical staff with a treble clef and a '2' above the first measure. The notes are: G4, A4, B4, C5, B4, A4, G4, F4, E4, D4, C4. The lyrics are written below the staff.

to-day las ma-ñā-nas ta-ñen Din-dan dindin-dan

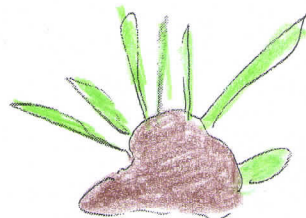
A musical staff with a treble clef. The notes are: G4, A4, B4, C5, B4, A4, G4, F4, E4, D4, C4. The lyrics are written below the staff.

PALMAS

2 2 3 2 0

Pal-mas pal-me-tas que son muy bo-

ni-tas pal-mas con a-mor que son se-na flore



mi violin

3 3 2 2 1 1 0

QUIE-RO PRON-TO MI VIO-LIN

A hand-drawn illustration of a violin and its bow is positioned to the right of the first two staves. The violin body is colored red, and the bow is brown with a white grip. The f-hole and bridge are also drawn in black ink.

3 3 2 2 1 1 0

Y PO- DER CAN-TAR FE-LIZ

1 1 2 2 3 3 2 2

DI- GO ES- TO CA-DA DÍ-A

1 1 2 2 1 1 0

Y NO QUIE-RO DIS-CO-TIR

SARPO

TRAPO

2 2 2 2 3 1 2 2 2 2 3 1

SA-SA SA PO TRA-PO TEN-GO TU ZA - PA - TO

0 0 0 0 1 2 3 3 3 3 2

DI ME QUE LO QUIE-RES CO CO - CO GER

2 3 1 2 2 3 1

NO DI-GAS QUE NO QUIE-RES

2 2 2 2 1 1 1 1 2 0 0

CO - CO - CO GE TU ZA - PA TO Y PON-Lo YA