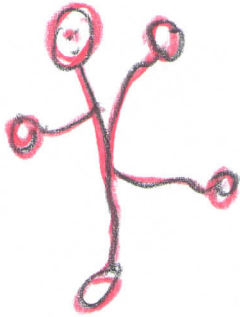


# Hop hop



hop



4 3 2 1

hop, hop, hop sal-tar sal-tar-do

A musical staff in treble clef with a key signature of two sharps (F# and C#) and a 4/4 time signature. The melody consists of quarter notes: G4, A4, B4, C5, B4, A4, G4, F#4. The lyrics are written below the staff, with the numbers 4, 3, 2, and 1 written above the notes G4, B4, A4, and F#4 respectively.

4 3 2 1

hop, hop, hop sal-tar yes-top

A musical staff in treble clef with a key signature of two sharps (F# and C#) and a 4/4 time signature. The melody consists of quarter notes: G4, A4, B4, C5, B4, A4, G4, F#4. The lyrics are written below the staff, with the numbers 4, 3, 2, and 1 written above the notes G4, B4, A4, and F#4 respectively.

# EL PINZÓN

sol

re

re

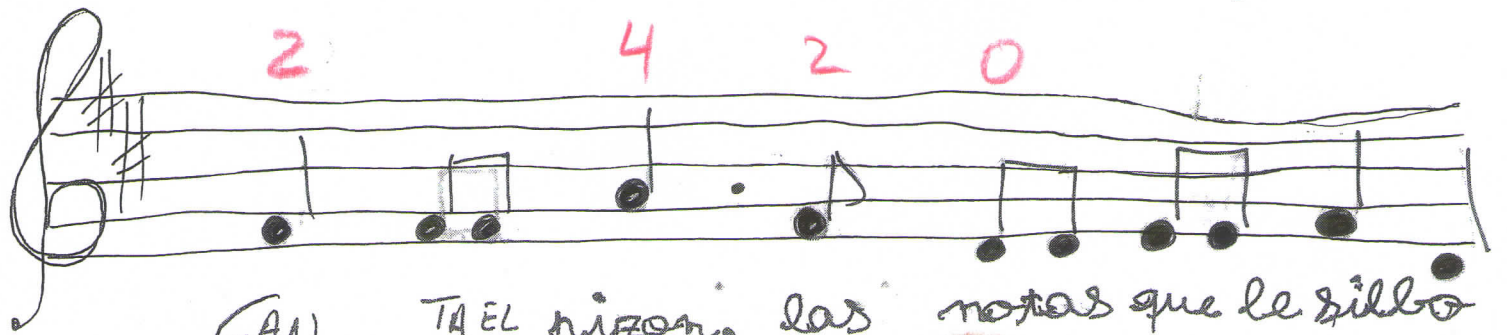
fa

2

4

2

0



CAN TA EL pinzon. las notas que le silbo



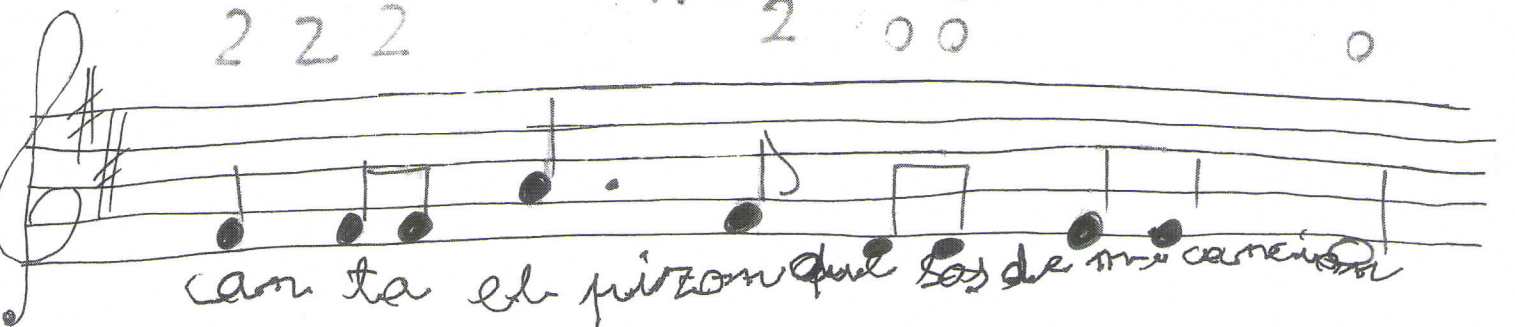
re

do

2 2 2

2 0 0

0



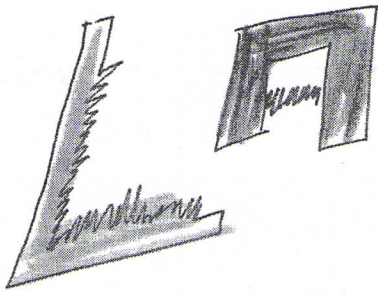
can ta el pinzon que las de mi carne

re

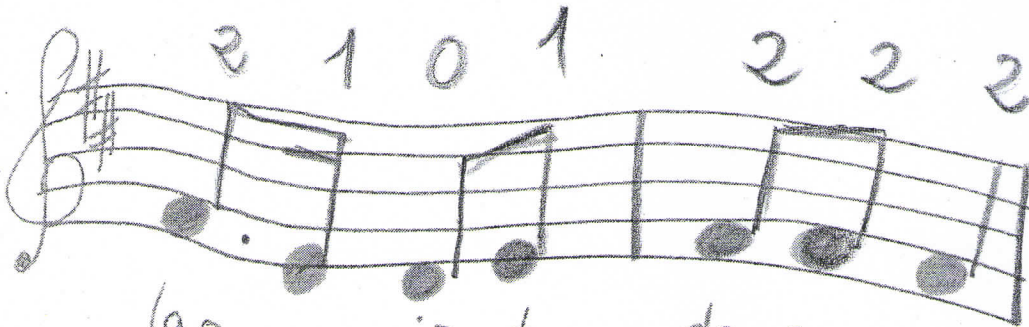
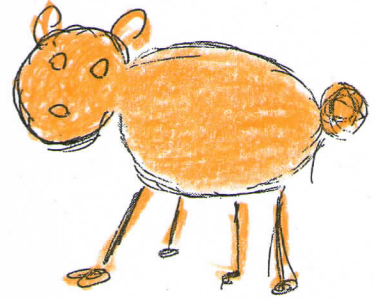
re

re

re

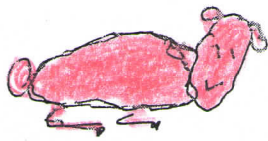


# OVEJITA



la o - ve - ji - ta  
cu - an - do sa - le

de ma - ma  
mi ma - ma



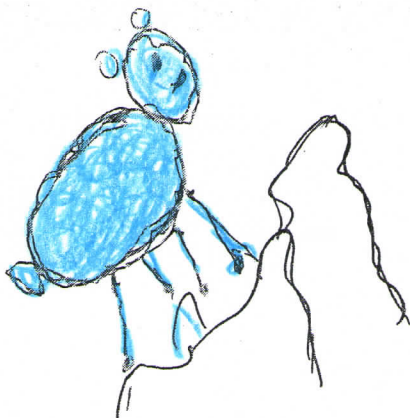
de ma - ma  
mi ma - ma

de ma - ma  
mi ma - ma



la o - ve - ji - ta  
cu - an - do sa - le

de ma - ma  
mi ma - ma



may mi - mo - sa es - ta  
e - lla - tam - bien - va .

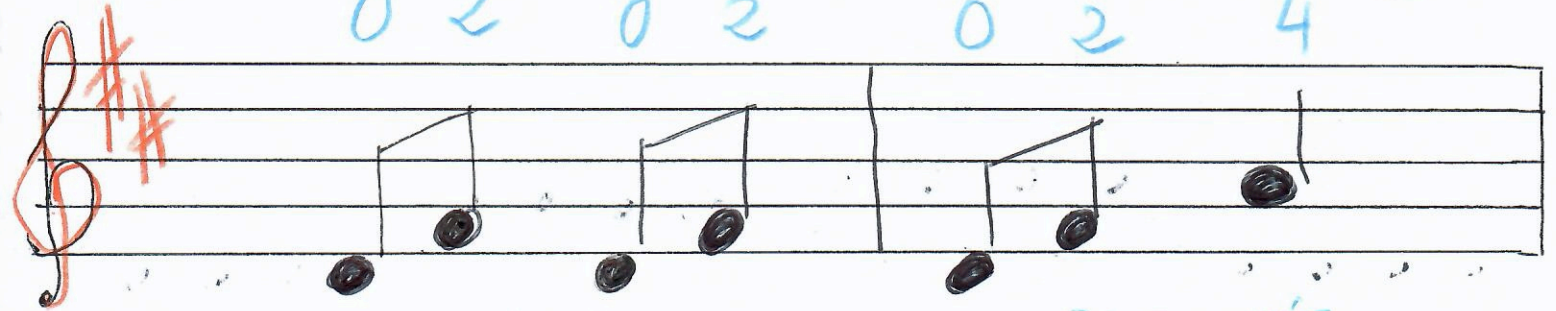
# LA HORMIGUITA



DO NA

JNE'S

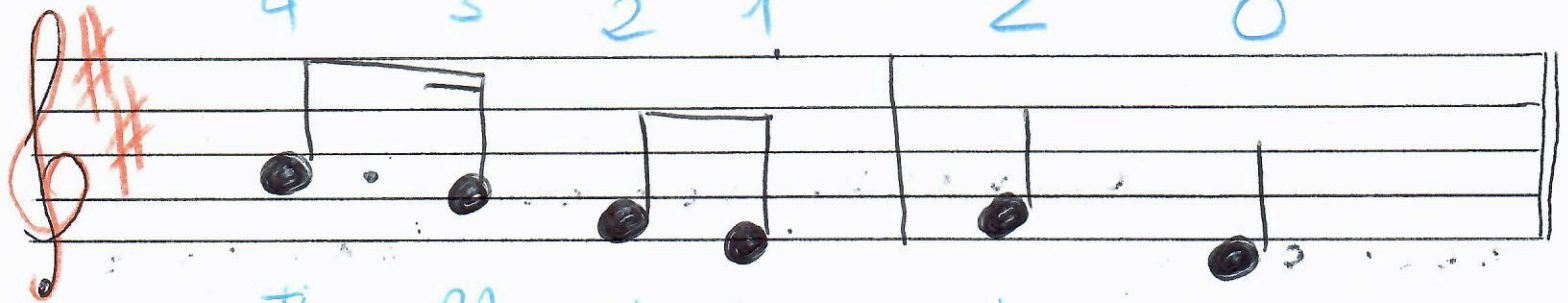
0 2 0 2 0 2 4



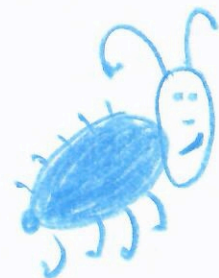
LA HOR MI GUI TA DO - NA J NÉS



4 3 2 1 2 0



TI RA LI RA LI RA



Zum

Zum

Zum



Musical notation for the first line, featuring a treble clef, a key signature of two sharps (F# and C#), and a 4/4 time signature. The notes are: quarter note G4, quarter note A4, quarter note B4, quarter rest, quarter note C5, quarter note B4, quarter note A4, quarter note G4, quarter rest, quarter note F#4, quarter note E4, quarter note D4, quarter note C4. The lyrics are: Zum Zum Zum es la-a-be-ja-a-zul

Musical notation for the second line, featuring a treble clef, a key signature of two sharps (F# and C#), and a 4/4 time signature. The notes are: quarter note G4, quarter note A4, quarter note B4, quarter note C5, quarter note B4, quarter note A4, quarter note G4, quarter note F#4, quarter note E4, quarter note D4, quarter note C4, quarter note B3, quarter note A3, quarter note G3, quarter note F#3, quarter note E3, quarter note D3, quarter note C3. The lyrics are: nun-ca duer-me no des-can-sa vee-la le-jos nun-ca pa-ra



Musical notation for the third line, featuring a treble clef, a key signature of two sharps (F# and C#), and a 4/4 time signature. The notes are: quarter note G4, quarter note A4, quarter note B4, quarter rest, quarter note C5, quarter note B4, quarter note A4, quarter note G4, quarter rest, quarter note F#4, quarter note E4, quarter note D4, quarter note C4. The lyrics are: Zum Zum Zum es la-a-be-ja-a-zul

Zum



Zum