

LIMDAPL ON D $\flat$ /C $\sharp$ 

Lydian

Maj7 $\flat$ 5

Ionian



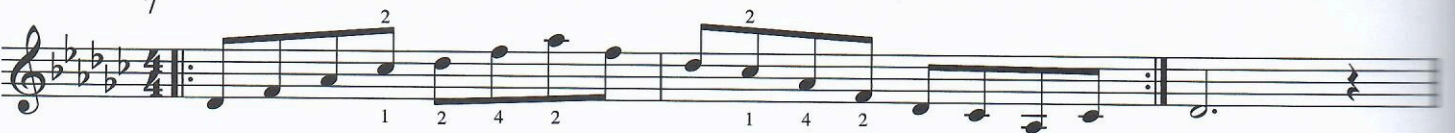
Maj7



Mixolydian



7



**Dorian**

**mi7**

**Aeolian**

**mi**b**6**

**Phrygian**

**sus(b9)**

**Locrian**

**mi**b**5**

FIG. 6.8. LIMDAPL on D<sup>b</sup>/C<sup>#</sup>