

THE CRANE DANCE

LUDOVICO EINAUDI

Violin

$\text{♩} = 84$

4

p *delicato*

The first staff of music is in treble clef, 3/4 time signature, and B-flat major. It begins with a tempo marking of quarter note = 84. A first ending bracket labeled '4' spans the first four measures. The music starts with a half note G4, followed by quarter notes A4, Bb4, and C5. The second ending consists of two measures of eighth notes: G4-A4 and Bb4-C5.

10

The second staff continues the melody from measure 10. It features a series of eighth notes with slurs: G4-A4, Bb4-C5, D5-E5, and F5-G5. A first ending bracket labeled 'V' spans the last two measures, which are eighth notes G4-A4 and Bb4-C5.

16

The third staff continues the melody from measure 16. It features a series of eighth notes with slurs: G4-A4, Bb4-C5, D5-E5, and F5-G5. The staff ends with a half note G4.

22

The fourth staff continues the melody from measure 22. It features a series of eighth notes with slurs: G4-A4, Bb4-C5, D5-E5, and F5-G5. The staff ends with a half note G4.

27

The fifth staff continues the melody from measure 27. It features a series of eighth notes with slurs: G4-A4, Bb4-C5, D5-E5, and F5-G5. A first ending bracket labeled 'V' spans the last two measures, which are eighth notes G4-A4 and Bb4-C5.

32

The sixth staff continues the melody from measure 32. It features a series of eighth notes with slurs: G4-A4, Bb4-C5, D5-E5, and F5-G5. A first ending bracket labeled 'V' spans the last two measures, which are eighth notes G4-A4 and Bb4-C5. The staff ends with a half note G4.

38



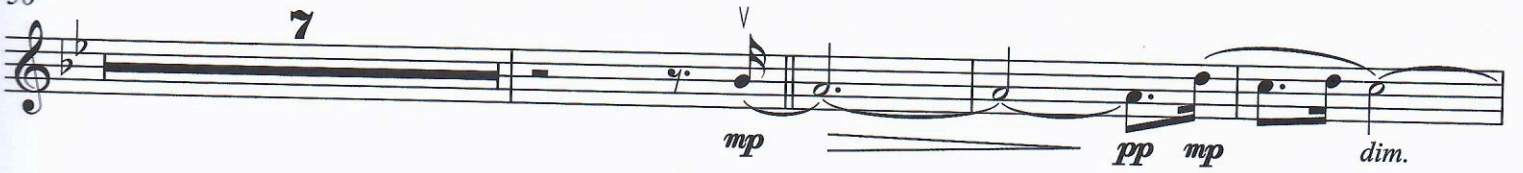
44



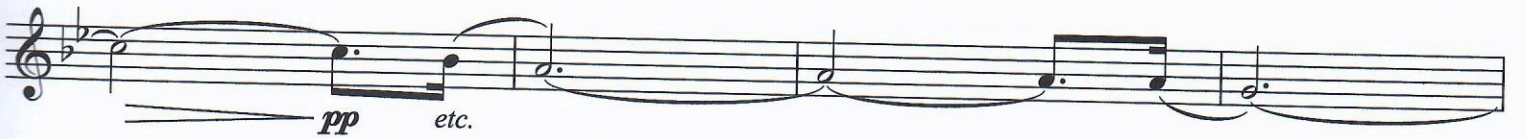
50



56



67



71



76

